



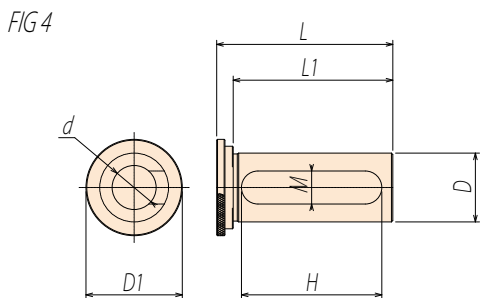
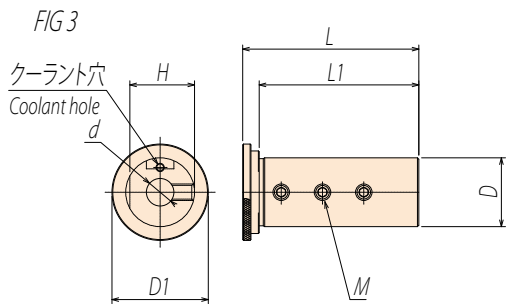
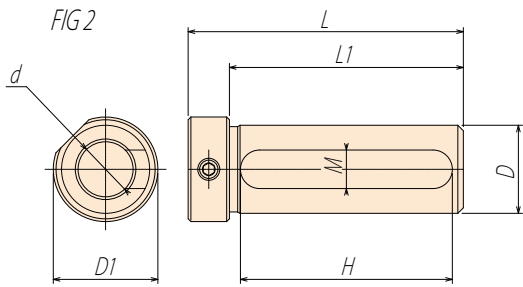
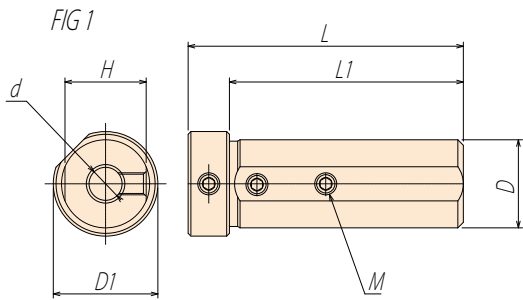
# 旋盤用スリーブ

## SLEEVE FOR LATHE



### 特長 Features

- ◆ 旋盤での内径・ボーリング加工用  
For boring on lathe.
- ◆ 豊富なサイズラインアップ  
Variety of sizes.
- ◆ ほぼ全ての旋盤メーカーに対応。  
Can be used on lathe of almost all manufacturers.

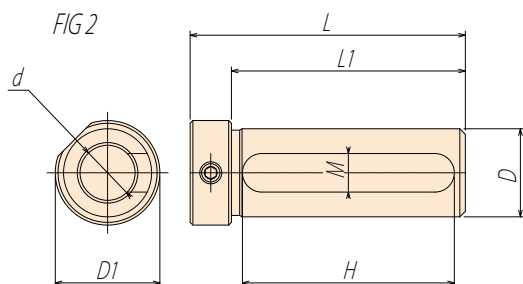
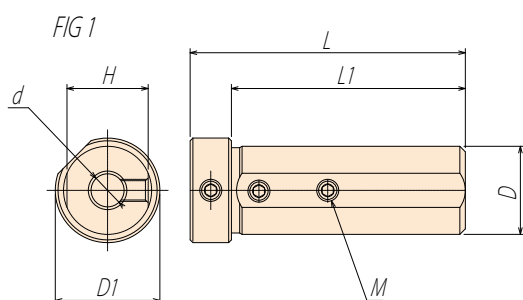


CODE	d	D	L	L1	D1	H	M	FIG	重量 (kg)
NC16-03	3	16	62	55	20	14.5	M4	1	0.11
NC16-04	4						0.10		
NC16-05	5						0.08		
NC16-06	6					M5	0.08		
NC16-08	8					14	0.07		
NC16-10	10					14.2	0.06		
NC16-12	12					50	11	2	0.06
NC20-04	4	20	67	60	27	17.5	M5	1	0.17
NC20-05	5						0.17		
NC20-06	6						0.16		
NC20-07	7					M6	0.15		
NC20-08	8					0.14			
NC20-10	10					0.13			
NC20-12	12					0.12			
NC20-14	14	53	13	2	0.09				
NC20-15	15				0.08				
NC20-16	16				0.07				
NC20S-06	6	20	52	45	25	18.5	M6	1	0.13
NC20S-08	8						0.12		
NC20S-10	10						0.11		
NC20S-12	12					0.10			
NC20S-16	16					39	11	2	0.06
NC25-04	4	25	64	58	35	23.5	M4	3	0.27
NC25-05	5						M5		0.26
NC25-06	6						0.26		
NC25-07	7					M6	3	0.25	
NC25-08	8							0.25	
NC25-09	9							0.24	
NC25-10	10					0.23			
NC25-11	11					0.23			
NC25-12	12					0.22			
NC25-13	13					0.20			
NC25-14	14					0.20			
NC25-15	15					51	12	4	0.19
NC25-16	16								0.18
NC25-17	17								0.17
NC25-18	18	0.16							
NC25-20	20	0.13							
NC25-22	22	0.10							



# 旋盤用スリーブ

SLEEVE FOR LATHE

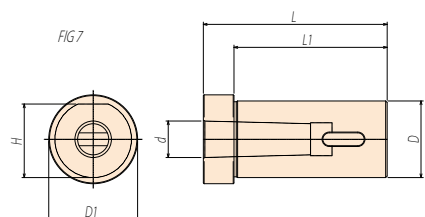
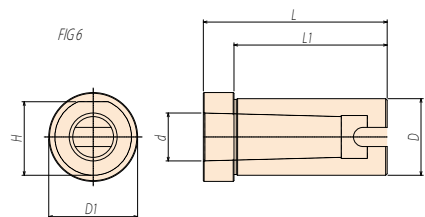
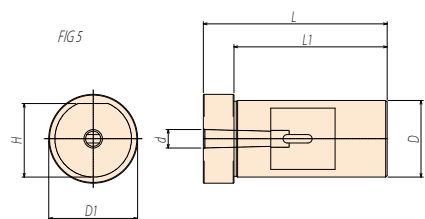
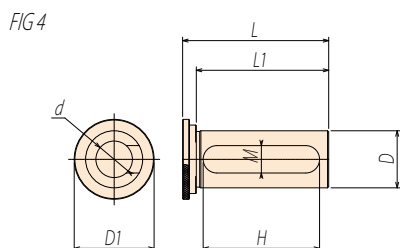
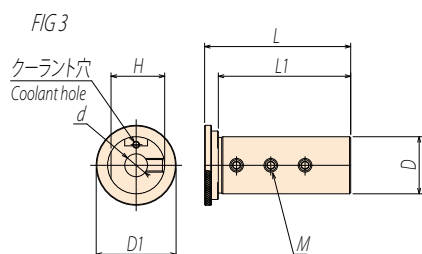
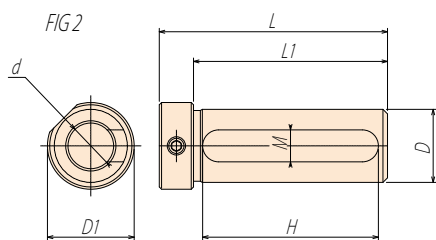
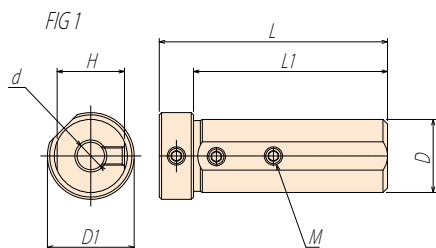


CODE	d	D	L	L1	D1	H	M	FIG	重量 (kg)
NC32-04	4	32	85	73	38	29.5	M6	1	0.56
NC32-05	5								0.53
NC32-06	6								0.55
NC32-07	7								0.53
NC32-08	8		0.54						
NC32-10	10		0.60						
NC32-12	12		0.58						
NC32-14	14		0.55						
NC32-15	15		0.55						
NC32-16	16		100	85	0.52				
NC32-18	18		0.49						
NC32-20	20		0.40						
NC32-22	22		77	14	2	0.36			
NC32-25	25		0.28						
NC40-05	5	40	100	85	46	38	M6	1	1.03
NC40-06	6								1.00
NC40-07	7								1.01
NC40-08	8								0.99
NC40-10	10		0.93						
NC40-12	12		0.94						
NC40-14	14		0.90						
NC40-15	15		0.89						
NC40-16	16		0.87						
NC40-18	18		0.83						
NC40-20	20		0.71						
NC40-22	22		78	14	2	0.69			
NC40-25	25		0.60						
NC40-32	32		0.40						
NC50-08	8	50	100	85	58	48	M8	1	1.60
NC50-10	10								1.59
NC50-12	12								1.56
NC50-14	14								1.53
NC50-16	16		1.50						
NC50-18	18		1.46						
NC50-20	20		1.40						
NC50-25	25		1.27						
NC50-32	32		77	14	2	0.97			
NC50-40	40		0.71						



# 旋盤用スリーブ

## SLEEVE FOR LATHE



CODE	d	D	L	L1	D1	H	M	FIG	重量 (kg)
NC6020	20	60	120	110	68	57	M8	1	2.45
NC6025	25								2.29
NC6032	32								2.00
NC6040	40								1.57
NC6050	50								0.89
NC25.4-06	6	25.4	64	58	35	23.5	M6	3	0.25
NC25.4-08	8								0.24
NC25.4-10	10								0.23
NC25.4-12	12					51	12	4	0.21
NC25.4-14	14								0.18
NC25.4-16	16								0.16
NC25.4-20	20								0.12
NC25-MTA1	MTA1	25	75	60	34	24	6	0.28	
NC25-MTA2	MTA2		0.23						
NC25-MTA3	MTA3		90					0.21	
NC32-MTA1	MTA1	32	85	75	42	30.8	5	0.53	
NC32-MTA2	MTA2		0.45						
NC32-MTA3	MTA3		100					0.47	
NC40-MTA1	MTA1	40	87	82	50	39	6	0.85	
NC40-MTA2	MTA2							0.75	
NC40-MTA3	MTA3		116	86				39	0.64
NC40-MTA4	MTA4								0.72
NC50-MTA1	MTA1	50	120	100	58	48.5	7	1.95	
NC50-MTA2	MTA2							1.83	
NC50-MTA3	MTA3							1.66	
NC50-MTA4	MTA4							6	1.39
NC50-MTA5	MTA5								146



# 旋盤用スリーブ

SLEEVE FOR LATHE



新製品



FIG1

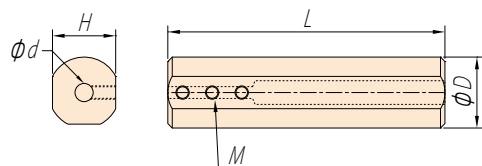


FIG2

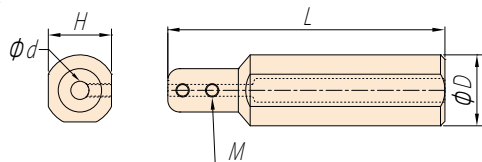
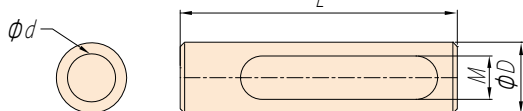


FIG3



CODE	d	D	L	H	M	FIG	重量 (kg)			
SHB-1602	2	16	100	14	M4	1	0.13			
SHB-1603	3						0.12			
SHB-1604	4						0.12			
SHB-1605	5						0.12			
SHB-1606	6			M5	0.11					
SHB-1607	7				0.11					
SHB-1608	8			0.10						
SHB-1610	10			15	M4		0.09			
SHB-2002	2	20	100	18	M3	2	0.20			
SHB-2003	3				M4		0.19			
SHB-2004	4				M5	1	1	0.19		
SHB-2005	5							0.21		
SHB-2006	6			0.21						
SHB-2007	7			0.21						
SHB-2008	8			0.21						
SHB-2010	10			0.16						
SHB-2012	12			0.14						
SHB-2203	3			22	100	20	M4	2	0.24	
SHB-2204	4								0.24	
SHB-2205	5						M5	1	1	0.27
SHB-2206	6	0.26								
SHB-2207	7	0.25								
SHB-2208	8	0.24								
SHB-2210	10	0.22								
SHB-2212	12	0.20								
SHB-2214	14	-	11			3	0.20			
SHB-2216	16	10	0.13							
SHB-2503	3	25	100	23	M4	1	0.37			
SHB-2504	4						0.36			
SHB-2505	5				M5	1	1	0.35		
SHB-2506	6							0.35		
SHB-2507	7							0.34		
SHB-2508	8							0.33		
SHB-2510	10			0.31						
SHB-2512	12			0.28						
SHB-2516	16			0.22						
SHB-2520	20			-	10	3	0.13			
SHB-19.05-06	6			19.05	100	18	M5	1	0.20	
SHB-19.05-08	8								0.19	
SHB-19.05-10	10	19	0.20							
SHB-19.05-12	12		0.19							
SHB-25.4-06	6	25.4	100	23	M5	1	0.37			
SHB-25.4-08	8						0.34			
SHB-25.4-10	10						23	M5	1	0.33
SHB-25.4-12	12									0.29
SHB-25.4-16	16			-	10	3	0.24			
SHB-25.4-20	20						0.24			