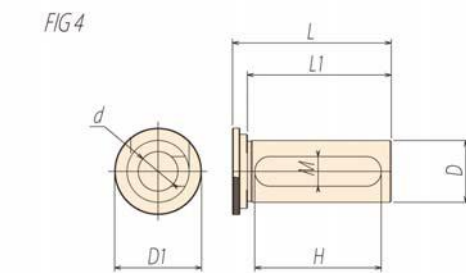
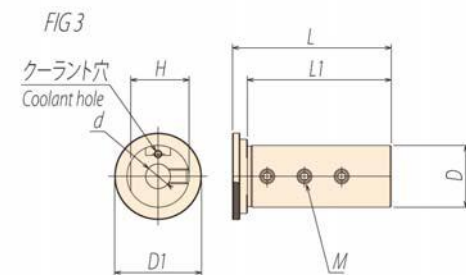
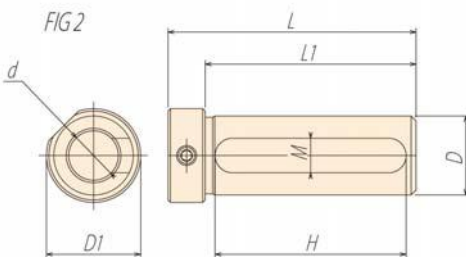
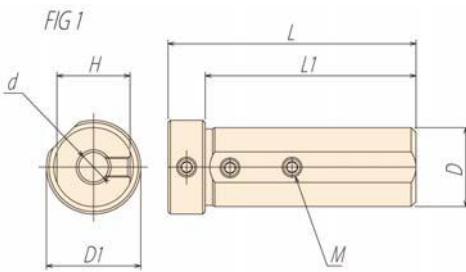


旋盤用スリーブ

SLEEVE FOR LATHE

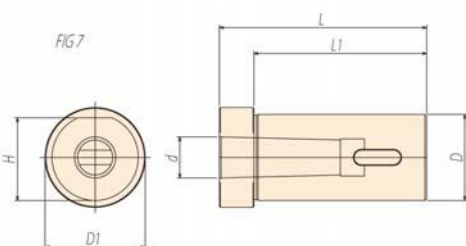
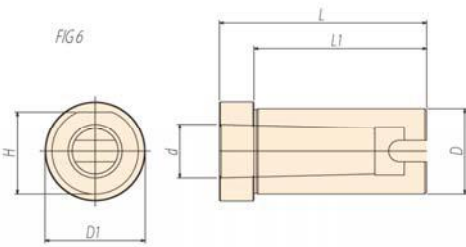
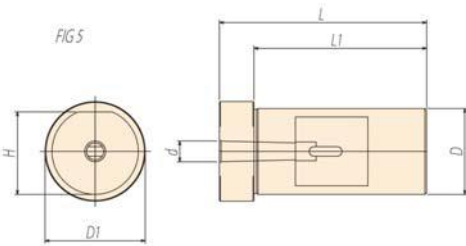
- ◆ 旋盤での内径・ボーリング加工用
For boring on lathe
- ◆ 豊富なサイズラインアップ
Variety of sizes
- ◆ ほぼ全ての旋盤メーカーに対応
Can be used on lathe of almost all manufacturers



CODE	d	D	L	L1	D1	H	M	FIG	kg		
NC16-03	3	16	62	55	20	14.5	M4	1	0.11		
NC16-04	4						0.10				
NC16-05	5						0.08				
NC16-06	6						0.08				
NC16-08	8						0.07				
NC16-10	10						0.06				
NC16-12	12					50	11	2	0.06		
NC20-04	4	20	67	60	27	17.5	M5	1	0.17		
NC20-05	5						0.17				
NC20-06	6						0.16				
NC20-07	7						0.15				
NC20-08	8						0.14				
NC20-10	10						0.13				
NC20-12	12					0.12					
NC20-14	14					55	13	2	0.09		
NC20-15	15								0.08		
NC20-16	16								0.07		
NC20S-06	6	20	52	45	25				17.5	M6	1
NC20S-08	8					0.12					
NC20S-10	10					0.11					
NC20S-12	12					0.10					
NC20S-16	16					40	11	2			
NC25-04	4	25	64	58	35	23.5	M4	3	0.27		
NC25-05	5						M5		0.26		
NC25-06	6						0.26				
NC25-07	7						0.25				
NC25-08	8						0.25				
NC25-09	9						0.24				
NC25-10	10						0.23				
NC25-11	11						0.23				
NC25-12	12						0.22				
NC25-14	14						51		12	4	0.20
NC25-15	15					0.19					
NC25-16	16					0.18					
NC25-17	17					0.17					
NC25-18	18					0.16					
NC25-20	20	0.13									
NC25-22	22	0.10									
NC32-04	4	32	80	65	38	29.5	M5	1	0.54		
NC32-05	5						0.54				
NC32-06	6						85		73	M6	0.56
NC32-07	7									0.63	
NC32-08	8									0.54	
NC32-10	10		0.60								
NC32-12	12		0.58								
NC32-14	14		100	85			M8		0.55		
NC32-15	15						0.55				
NC32-16	16						0.52				
NC32-18	18					0.49					
NC32-20	20					0.40					
NC32-22	22					77	14	2	0.36		
NC32-25	25								0.28		

旋盤用スリーブ

SLEEVE FOR LATHE



CODE	d	D	L	L1	D1	H	M	FIG	kg			
NC40-05	5	40	100	85	46	38	M6	1	1.03			
NC40-06	6								1.00			
NC40-07	7								1.01			
NC40-08	8								0.99			
NC40-10	10								0.93			
NC40-12	12								0.94			
NC40-14	14								0.90			
NC40-15	15					0.89						
NC40-16	16					0.87						
NC40-18	18					0.83						
NC40-20	20					77	14	2	0.71			
NC40-22	22								0.69			
NC40-25	25								0.60			
NC40-32	32								0.38			
NC50-08	8	50	100	85	58				48	M8	1	1.58
NC50-10	10											1.56
NC50-12	12					1.53						
NC50-14	14					1.51						
NC50-16	16					1.47						
NC50-18	18					1.43						
NC50-20	20					1.39						
NC50-25	25					1.26						
NC50-32	32					77	14	2	0.95			
NC50-40	40								0.71			
NC6020	20	60	120	110	68	57	M8	1	2.44			
NC6025	25								2.28			
NC6032	32								1.98			
NC6040	40								1.55			
NC6050	50					100	14	2	0.87			
NC25-MTA1	MTA1	25	75	60	34	24		6	0.28			
NC25-MTA2	MTA2		90						0.23			
NC25-MTA3	MTA3		0.21									
NC32-MTA1	MTA1	32	85	75	42	31		5	0.53			
NC32-MTA2	MTA2		100						0.45			
NC32-MTA3	MTA3		0.45									
NC40-MTA1	MTA1	40	87	82	50	38		6	0.82			
NC40-MTA2	MTA2		116						0.75			
NC40-MTA3	MTA3		86						0.64			
NC40-MTA4	MTA4		0.72									
NC50-MTA1	MTA1	50	120	100	58	48		7	1.76			
NC50-MTA2	MTA2					48.5			1.83			
NC50-MTA3	MTA3					48			1.66			
NC50-MTA4	MTA4					146			126	48	1.39	
NC50-MTA5	MTA5					0.94						